

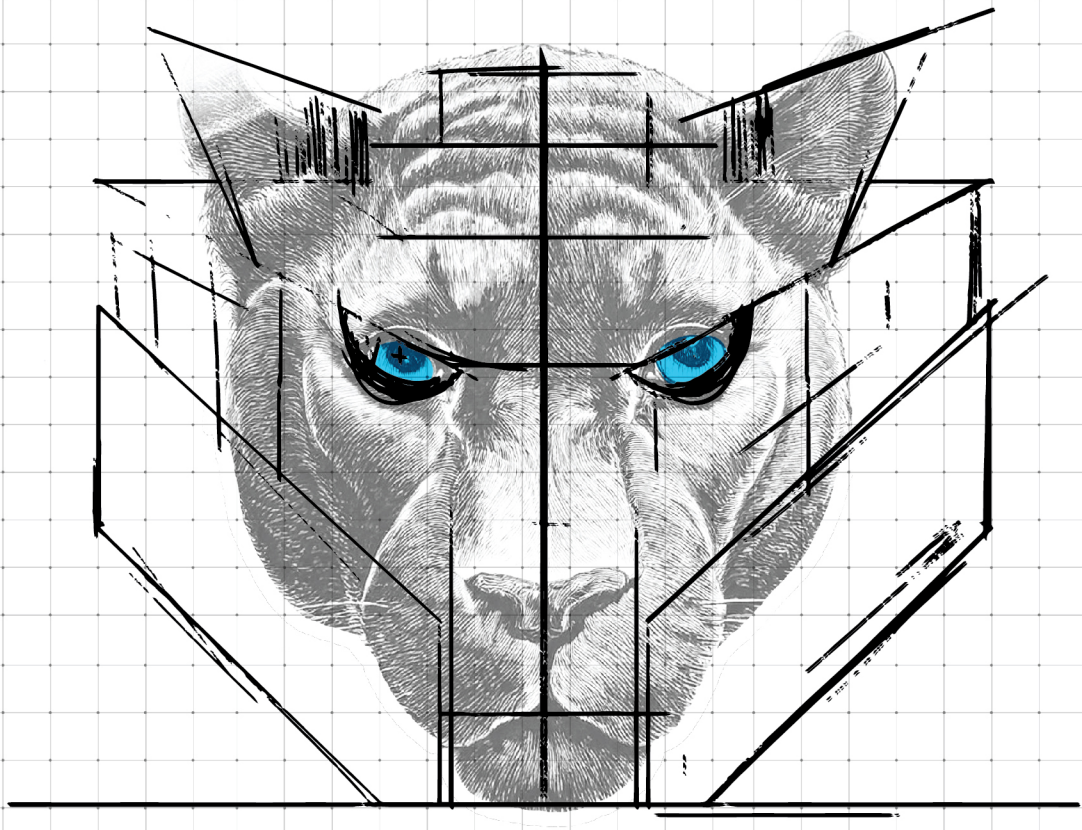
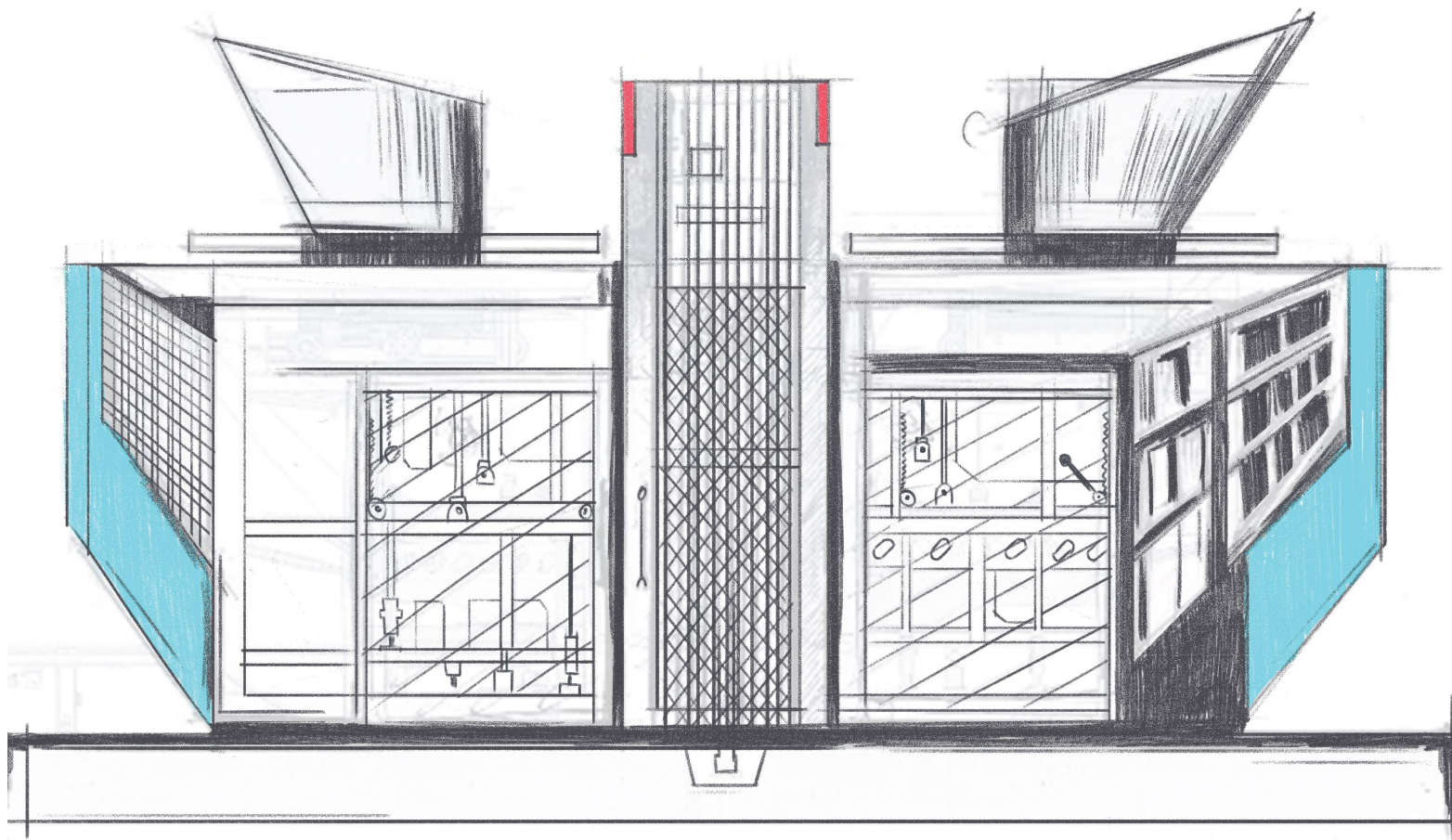
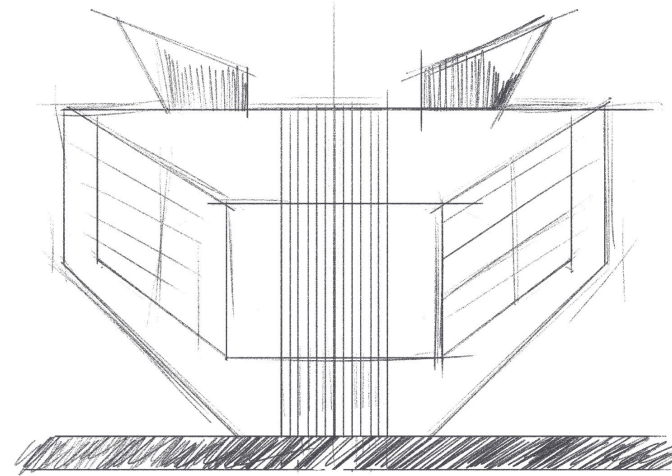
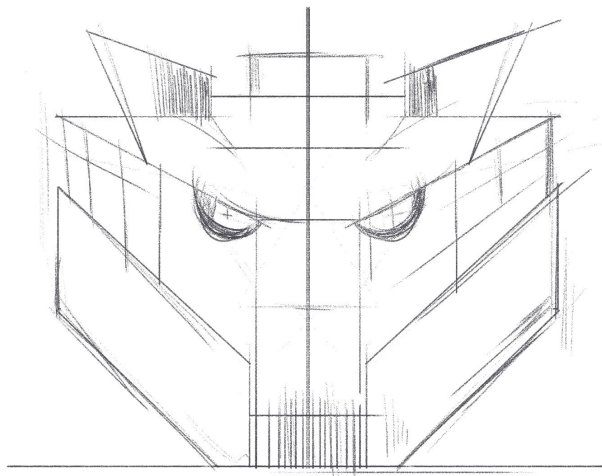
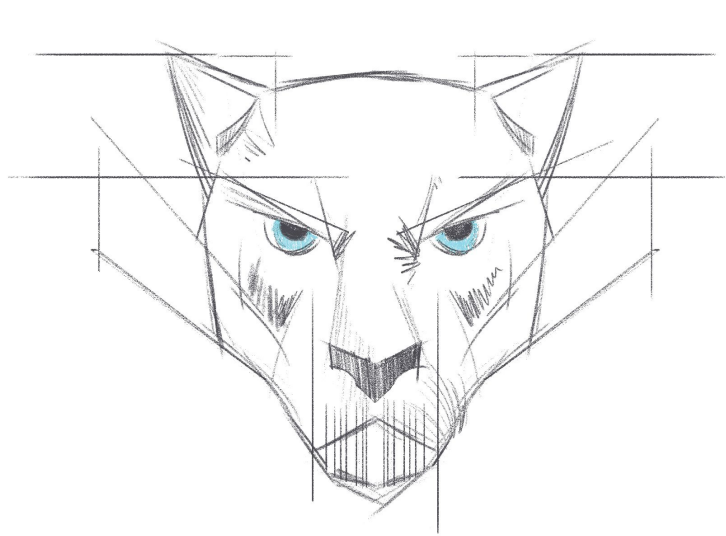
 **REVOMAC**™
  **INDUSTRIES**
PRIVATE LIMITED
Revolutionizing Machineries



MAC+
ROBOTIC



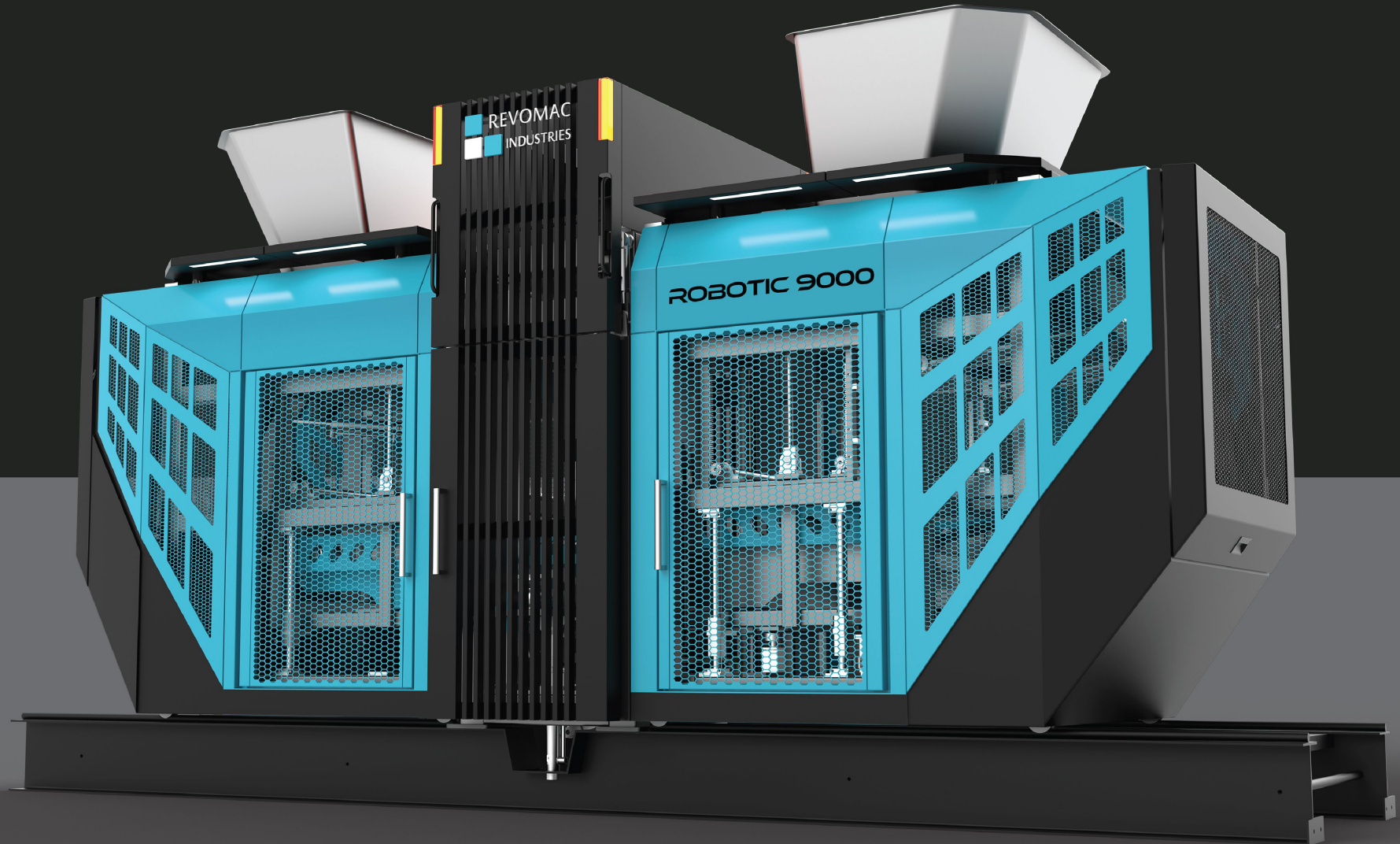
DESIGN INSPIRATION

MAC⁺ Robotic is the latest and most stylish entrant in the concrete machine manufacturing industry.

Its jaguar-inspired design is indicative of its strength, power and pace.

**IMPACTFUL
AUTOMATION**

ROBOTIC



WHY MAC⁺ ROBOTIC

VALUE FOR MONEY

Powered with most advanced automation, this machine is so much more than an investment that is bound to yield promising returns.



USER-FRIENDLY OPERATION/ SIMPLE PRODUCTION LINE

Its high-tech robotics and automation makes the machine ready for all kinds of operations, further enhancing productivity and precision.



POWERFUL AUTOMATION SYSTEM

Minimised human intervention ensures simplistic and ease of operations, as most of the processes are automated.



UNIQUE AND INNOVATIVE DESIGN

The design is as much functional as it is innovative. With a more compact design, MAC⁺ Robotic ensures best space utilisation and fresher ambience to the facility.



ADVANCE TECHNOLOGY

MAC⁺ Robotic is built for the future. Its advanced automation and world-class technological strengths make it ideal for pace and perfection.



REVOLUTIONISING CONSTRUCTION MACHINERY SINCE 2010

Same paths rarely lead to a new destination. So, Revomac Industries Pvt. Ltd. created a new path that is guided by the power of technology. As a pioneer in manufacturing and export of high quality concrete machinery, the company is one of the most trusted partners across the world.

Headquartered at Ahmedabad, Gujarat, it boasts of a state-of-the-art inhouse manufacturing plant for building highly efficient machinery solutions for Fly Ash Bricks, Paver Stone, Cobblestone, Concrete Blocks, Hollow Blocks, & Kerbstones. Further, the experienced and professional sales team ensures a prompt and timely response.

Revomac Industries Pvt. Ltd. boasts of a robust infrastructure and technology that is at par with the global standards. Their latest Vibro+ Hydro Indian Technology assures 100% quality satisfaction amongst customers.

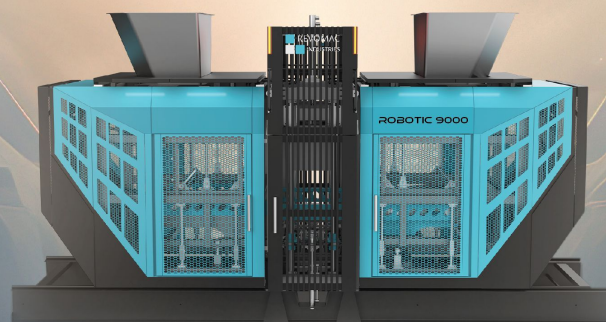
DIRECTOR'S MESSAGE

With the advent of a new era, our country India has created its VIBRANT image which is Globally appreciated. We are committed to the **MAKE IN INDIA** Initiative.

We have a thorough understanding of our clients' needs and our vision is to partner with our clients in building eco-friendly infrastructure across the globe.

We are committed to delivering quality products and reliable service through a team of highly skilled professionals. We are focused on our mission to educate and encourage our clients to develop eco-friendly projects by providing not just the machine but a complete business model with the focus on quality and return on Investments (ROI).



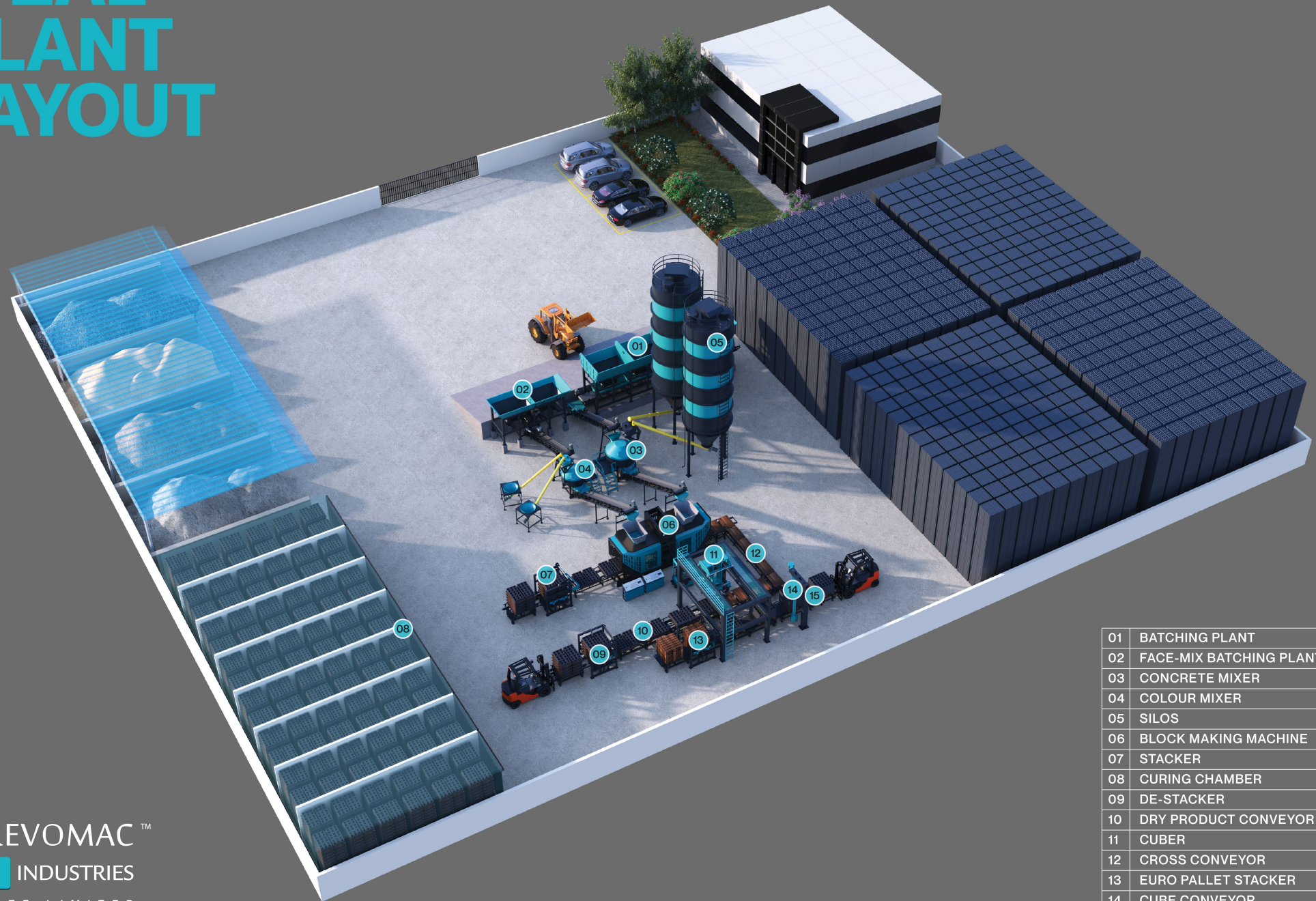


GET READY FOR

THE FUTURE

TODAY

IDEAL PLANT LAYOUT

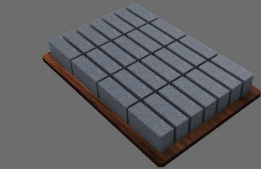


01	BATCHING PLANT
02	FACE-MIX BATCHING PLANT
03	CONCRETE MIXER
04	COLOUR MIXER
05	SILOS
06	BLOCK MAKING MACHINE
07	STACKER
08	CURING CHAMBER
09	DE-STACKER
10	DRY PRODUCT CONVEYOR
11	CUBER
12	CROSS CONVEYOR
13	EURO PALLET STACKER
14	CUBE CONVEYOR
15	STRETCH FILM PACKAGING DEVICE

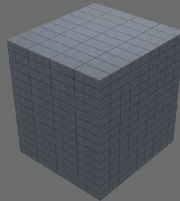
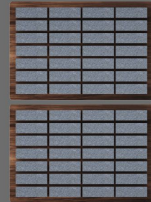
Pallet Size:- 1150 x 720 mm

PRODUCTION CAPACITY

BRICK ON EDGE

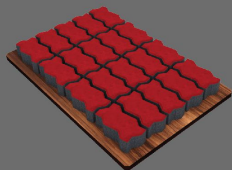


230X75X110 (28)
Pcs/Shift 67200

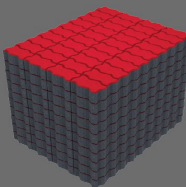


Cube Size 1050X920

UNISHAPE PAVER



225X112.5X80 (20)
Pcs/Shift 36000

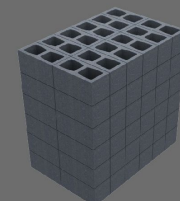


Cube Size 1135X915

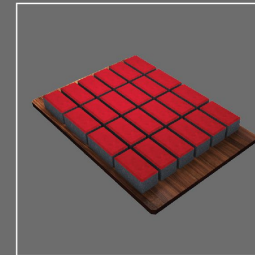
HOLLOW BLOCK



400X200X200 (06)
Pcs/Shift 10800

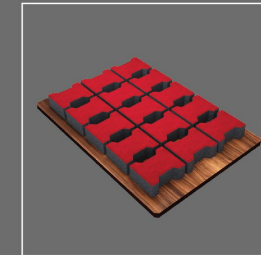


Cube Size 1200X800



RECTANGULAR PAVER

200X100X80 (24)
Pcs/Shift 43200



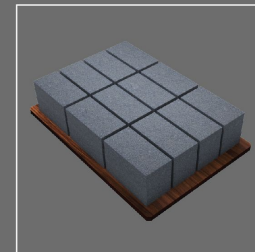
I SHAPE PAVER

200X165X80 (15)
Pcs/Shift 27000



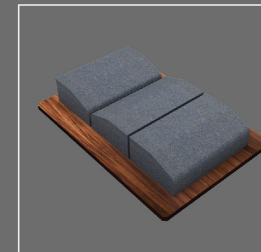
BRICK

230X110X75 (20)
Pcs/Shift 48000



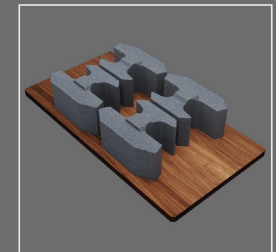
SOLID BLOCK

300X150X200 (12)
Pcs/Shift 21600



KERB STONE

450X300X150 (03)
Pcs/Shift 5400



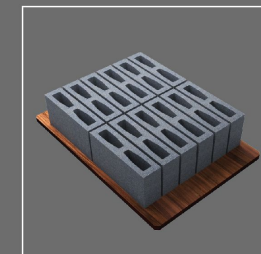
RETAINING BLOCK

456X305X203 (04)
Pcs/Shift 7200



HOLLOW BLOCK

400X150X200 (08)
Pcs/Shift 14400



HOLLOW BLOCK

400X100X200 (12)
Pcs/Shift 21600



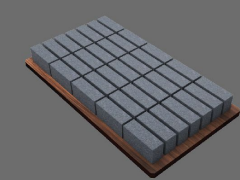
HOURDI BLOCK

445X150X225 (8)
Pcs/Shift 14400

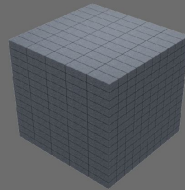
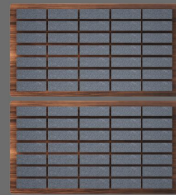
Pallet Size:- 1400 x 720 mm

PRODUCTION CAPACITY

BRICK ON EDGE

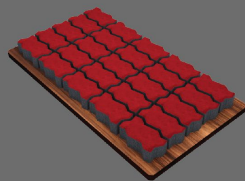


230X75X110 (35)
Pcs/Shift 84000

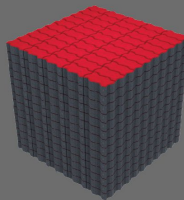


Cube Size 1050X1050

UNISHAPE PAVER

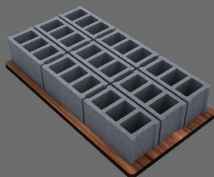


225X112.5X80 (25)
Pcs/Shift 45000

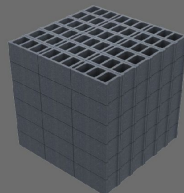
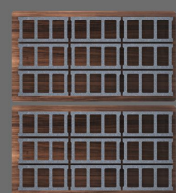


Cube Size 1150X1150

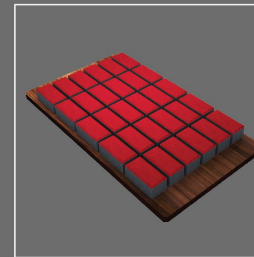
HOLLOW BLOCK



400X200X200 (09)
Pcs/Shift 16200

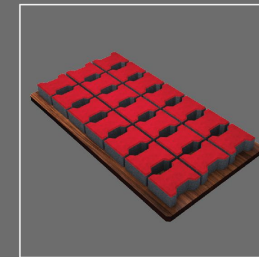


Cube Size 1200X1200



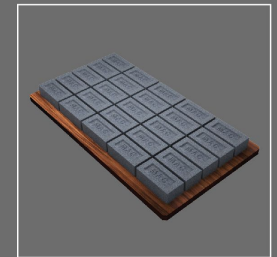
RECTANGULAR PAVER

200X100X80(30)
Pcs/Shift 54000



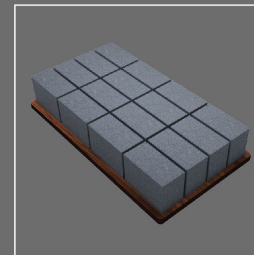
I SHAPE PAVER

200X165X80 (21)
Pcs/Shift 37800



BRICK

230X110X75 (25)
Pcs/Shift 60000



SOLID BLOCK

300x150x200 (16)
Pcs/Shift 28800



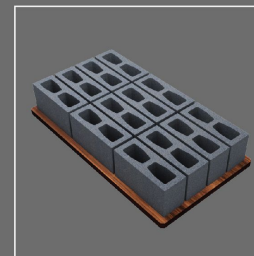
KERB STONE

450X300X150 (04)
Pcs/Shift 7200



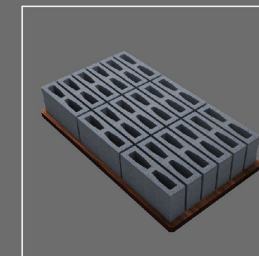
RETAINING BLOCK

456X305X203 (04)
Pcs/Shift 7200



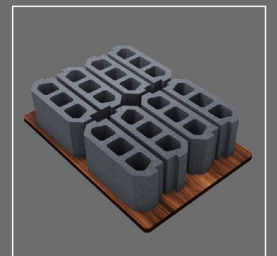
HOLLOW BLOCK

400X150X200 (12)
Pcs/Shift 21600



HOLLOW BLOCK

400X100X200 (18)
Pcs/Shift 32400




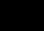
HOURLI BLOCK

445X150X225 (08)
Pcs/Shift 14400



Production Capacity Table


Pallet Size:- 1150 x 720 mm

PRODUCT		SIZE (MM)	Pcs./PALLET	Pcs./HOUR	Pcs./SHIFT (10 Hr)	CUBE SIZE (MM)
	SOLID BLOCK	400X200X200	6	1080	10800	1200X800
		400X150X200	8	1440	14400	1200X800
		400X100X200	12	2160	21600	1200X800
		300x150x200	12	2160	21600	1200X900
	HOLLOW BLOCK	400X200X200	6	1080	10800	1200X800
		400X150X200	8	1440	14400	1200X800
		400X100X200	12	2160	21600	1200X800
	BRICK WITH FROG	230X110X75	20	4800	48000	1100X920
		190x90x90	30	7200	72000	1080X950
		250x120x75	15	3600	36000	1200X750
	KERB STONE	300X300X150	6	1080	10800	1200X900
		450X300X150	3	540	5400	900X900
		600X450X150	2	360	3600	1200x900
	COBBLE STONE PAVER	150X150X60	24	4320	43200	1200X900
		300X300X60	6	1080	10800	1200X900
		300x150X60	12	2160	21600	1200X900
	SQUARE PAVER	100X100X80	48	8640	86400	1200X790
		200X200X80	12	2160	21600	1200X800
	UNISHAPE/ZIG ZAG PAVER	225X112.5X80	20	3600	36000	1135X915
	I-SHAPE PAVER	200X165X80	15	2700	27000	1190X820
	RECTANGULAR PAVER	200X100X80	24	4320	43200	1190X800
	HEXAGONAL PAVER	120X80	13	2340	23400	1250x960
	OCTAGONAL PAVER	200X80	12	2160	21600	1190x795
	DIAMOND PAVER	120X80	35	6300	63000	1075x720
	GRASS PAVER	400X200X80	6	1080	10800	1200X800
	L-SHAPE PAVER	200X200X80	16	2880	28800	1150x800
	BRICK ON EDGE/WITHOUT FROG	230X75X110	28	6720	67200	1050X920
	HOUDIS BLOCK	445X150X225	8	1440	14400	1050X920
	RETAINING BLOCK	456X305X203	4	720	7200	1220x900
	SPLIT BLOCK	400X400X200	2	360	3600	800x800

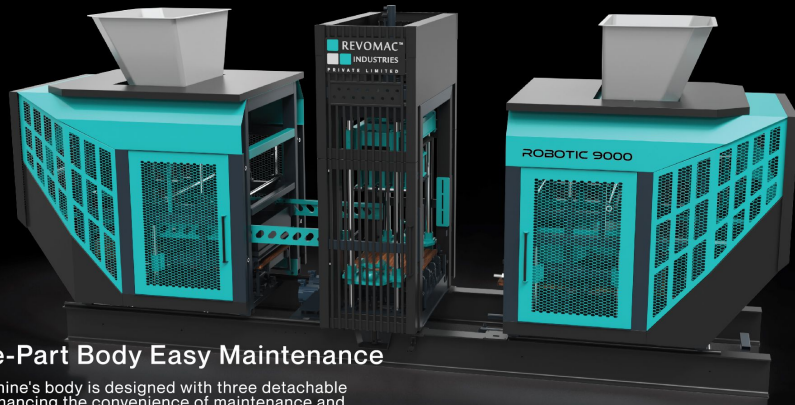


Production Capacity Table

Pallet Size:- 1400 x 720 mm

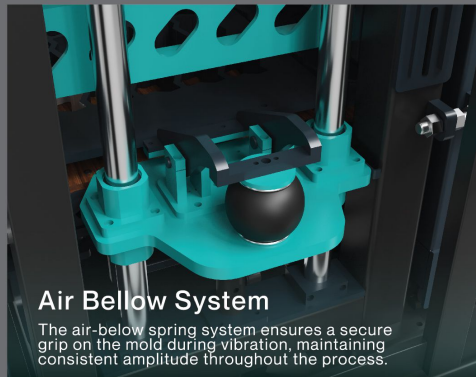
PRODUCT		SIZE (MM)	Pcs./PALLET	Pcs./HOUR	Pcs./SHIFT (10 Hr)	CUBE SIZE (MM)
	SOLID BLOCK	400X200X200	9	1620	16200	1200X1200
		400X150X200	12	2160	21600	1200X1200
		400X100X200	18	3240	32400	1200X1200
		300x150x200	16	2880	28800	1200X1200
	HOLLOW BLOCK	400X200X200	9	1620	16200	1200X1200
		400X150X200	12	2160	21600	1200X1200
		400X100X200	18	3240	32400	1200X1200
	BRICK WITH FROG	230X110X75	25	6000	60000	1150X1100
		190x90x90	36	8640	86400	1140X1080
		250x120x75	20	4800	48000	1200X1000
	KERB STONE	300X300X150	8	1440	14400	1200x1200
		450X300X150	4	720	7200	1200X900
		600X450X150	2	360	3600	1200x900
	COBBLE STONE PAVER	150X150X60	28	5040	50400	1200x1050
		300X300X60	8	1440	14400	1200x1200
		300x150X60	16	2880	28800	1200x1200
	SQUARE PAVER	100X100X80	66	11880	118800	1200x1090
		200X200X80	15	2700	27000	1190x990
	UNISHAPE/ZIG ZAG PAVER	225X112.5X80	25	4500	45000	1150X1150
	I-SHAPE PAVER	200X165X80	21	3780	37800	1200X1150
	RECTANGULAR PAVER	200X100X80	30	5400	54000	1200X1000
	HEXAGONAL PAVER	120X80	15	2700	27000	1250X1145
	OCTAGONAL PAVER	200X80	18	3240	32400	1190x1190
	DIAMOND PAVER	125X80	45	8100	81000	1075x920
	GRASS PAVER	400X200X80	9	1620	16200	1200x1200
	L-SHAPE PAVER	200X200X80	20	3600	36000	1150x1100
	BRICK ON EDGE/WITHOUT FROG	230X75X110	35	8400	84000	1050X1050
	HOUDIS BLOCK	445X150X225	8	1440	14400	1200x890
	RETAINING BLOCK	456X305X203	4	720	7200	1220x900
	SPLIT BLOCK	400X400X200	3	540	5400	1200x800

TECHNOLOGY FEATURES



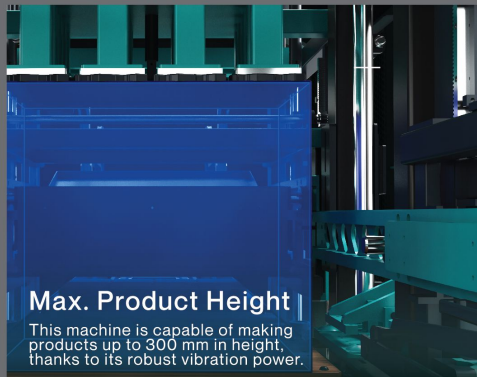
Three-Part Body Easy Maintenance

The machine's body is designed with three detachable parts, enhancing the convenience of maintenance and daily cleaning. The ease of handling these components makes it user-friendly and practical for regular use.



Air Bellow System

The air-below spring system ensures a secure grip on the mold during vibration, maintaining consistent amplitude throughout the process.



Max. Product Height

This machine is capable of making products up to 300 mm in height, thanks to its robust vibration power.



Top Vibration

The temper head features top vibration, enhancing the bonding of the face mix for paving products and improving the surface finish. It also facilitates the easy release of concrete products during demolding.



Direct Servo Vibration System

A precision vibrator, driven by a servo motor, generates controlled, strong vibrations essential for crafting high-strength concrete products with consistent quality.

Fast Mould Filling System

The machine is designed to complete mold-filling processes more efficiently, leading to a decrease in the overall cycle time. This enhancement in speed not only improves productivity but also contributes to a more streamlined manufacturing operation.



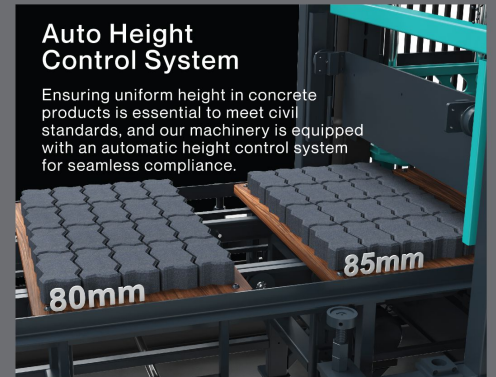
Heating Pad System

The punch is equipped with an integrated heating pad system to ensure a consistent top surface for paving products. This feature allows for even heat distribution, which is essential for achieving a smooth and level finish on the paved surface.



Strong and Uniform Vibration

Enhanced product strength with minimal cement is achievable through the efficient vibration of the impact bar system.

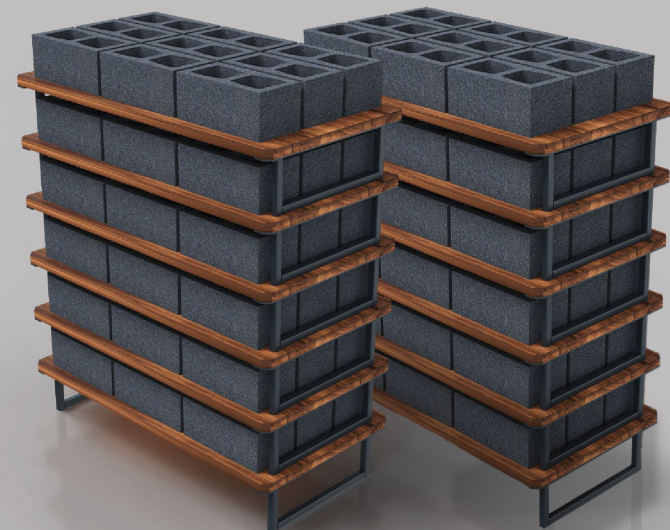


Auto Height Control System

Ensuring uniform height in concrete products is essential to meet civil standards, and our machinery is equipped with an automatic height control system for seamless compliance.

Auto Rack System

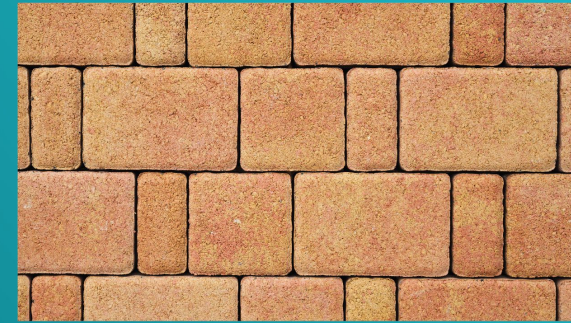
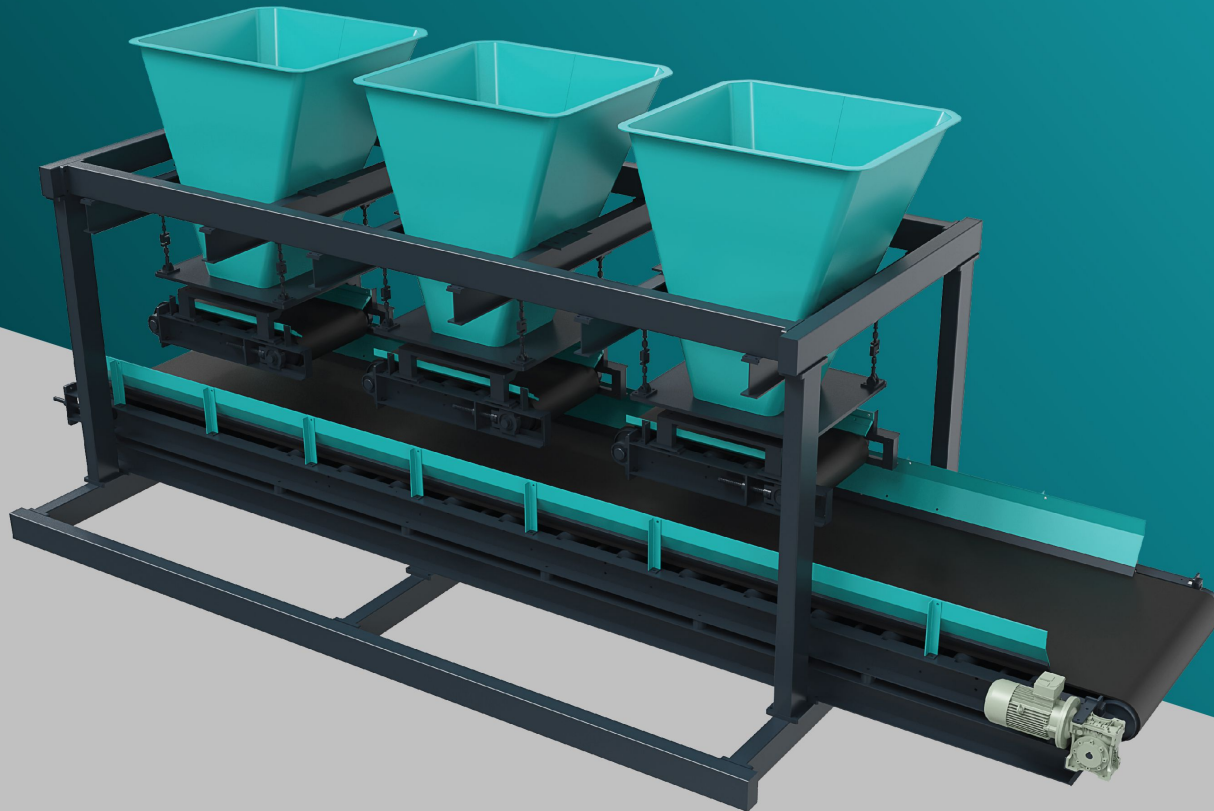
Curing plays a crucial role in the production of concrete products. Utilising pallets with legs can significantly cut down the expense associated with racks, as they enable automatic rack formation when stacked.



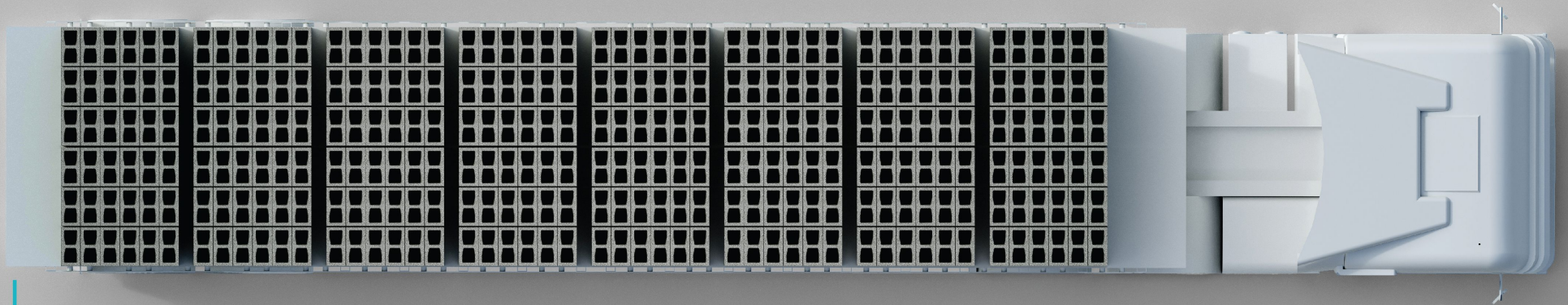
MULTI-COLOUR PRODUCT SYSTEM

MAC⁺ Robotic is built with a unique multi-colour product system that enables manufacturing concrete products in multiple colored top face. This machine is freely programmable, thus feeding of the various colour in unique gradients is possible. This system is capable of producing paving products with a natural finish and creative colour play.

Further, with a variety of easy and adjustable operations, **MAC⁺ Robotic** makes the process of concrete products manufacturing creative and colourful.



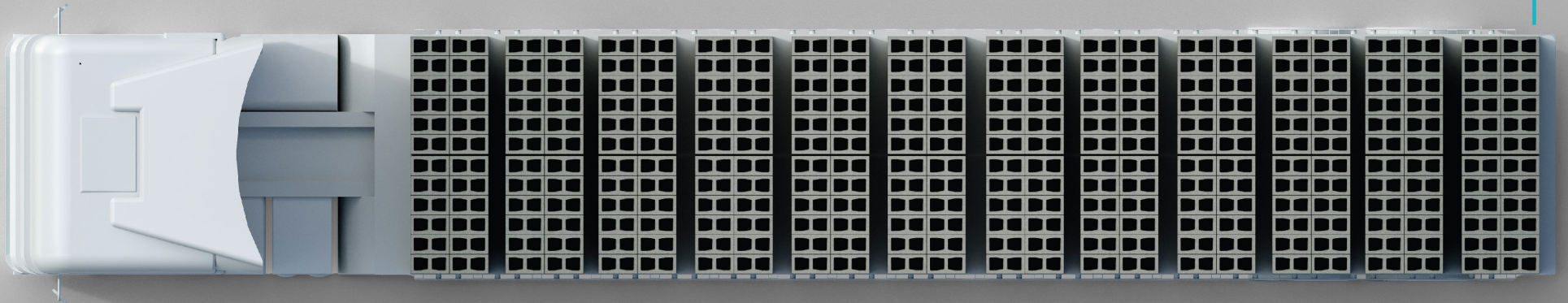
DISPATCH CONVENIENCE



ROBOTIC
9000

40FT

ROBOTIC
6000



PRODUCT APPLICATION



RE WALL BLOCK BRIDGE



PAVER BLOCK



GRASS PAVERS



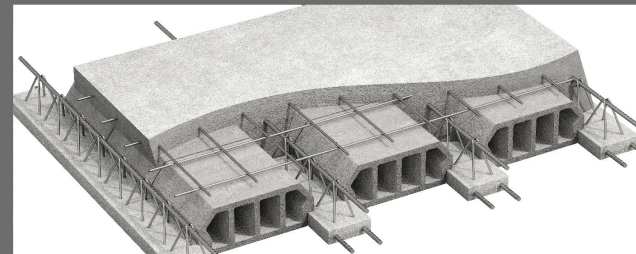
PAVEMENT + KERB



BOUNDARY WALL



BUILDINGS



HOURDI BLOCKS (CEILING & FLOORING)

MANUFACTURING FACILITY

Revomac Industries Pvt. Ltd. comprises an inhouse manufacturing facility across the built-up area of 60,000 sq.ft. Equipped with modern machinery and technology, the facility also houses a design office, tool room, metal treatment shop, fabrication shop, paint shop, and testing shop.

An experienced team of engineers who are trained and skilled in a variety of techniques, methods, and operations, further ensure an output that is high in quality and performance. With the implementation of precise instruments and standard mechanical components, Revomac Industries successfully meets all desired standards of quality, tolerance and efficiency.



MOLD MANUFACTURING



Perfection of a product is always as good as the precision of its mold. So, Revomac Industries design and manufacture high quality molds that are perfected with engineering expertise and technology. With the use of the Modern CAD system and Finite Element Analysis (FEA) Method, all molds are tested for their structural strength. They implement Three Dimensional CAE method to test the molds for multiple load cases, vibration analysis, stress analysis, thermal analysis, and joint & geometry analysis.

Revomac Industries offer molds that are reliable, durable and offer utmost precision.

AFTER SALES SERVICE

Sale of the machine is just the beginning of our offerings. With prompt and timely After Sales Service, we ensure that the installed machinery is maintained to function optimally in the long run. We offer After Sales Services through,

ON-CALL ASSISTANCE

Our highly qualified service technicians are available for telephonic assistance 24x7 for prompt and timely guidance incase of machine malfunction.

ONSITE SERVICE

We offer free onsite services for regular maintenance of the machine. This includes 3 free service visits annually. i.e. 1 free service every 4 months

REVOMAC HOTLINE

In case of an emergency, you can connect with the service hotline,

Phone:- +91 63549 16462, or
Email:- service@revomacglobal.com

CALL IN FOR SPARE PARTS

You can easily reach out to
Phone:-+91 63549 16462 or
Email:- service@revomacglobal.com
for all kinds of spare part support and requirements. For any urgent support, you can reach out to our Region-based engineers for a quick intervention.

REMOTE ASSISTANCE AND SUPPORT

Our technicians are skilled to provide remote support through specialised systems. All you have to do is, just Scan the QR code and connect your machine. Our technicians will take up from thereon.

PRODUCT CONSULTATION & SUPPORT

We offer continuous support with regards to product function, operations and product recipe. We also offer expert guidance on product development for the machines manufactured by Revomac as well as other brands.

OPERATOR TRAINING PROGRAMME

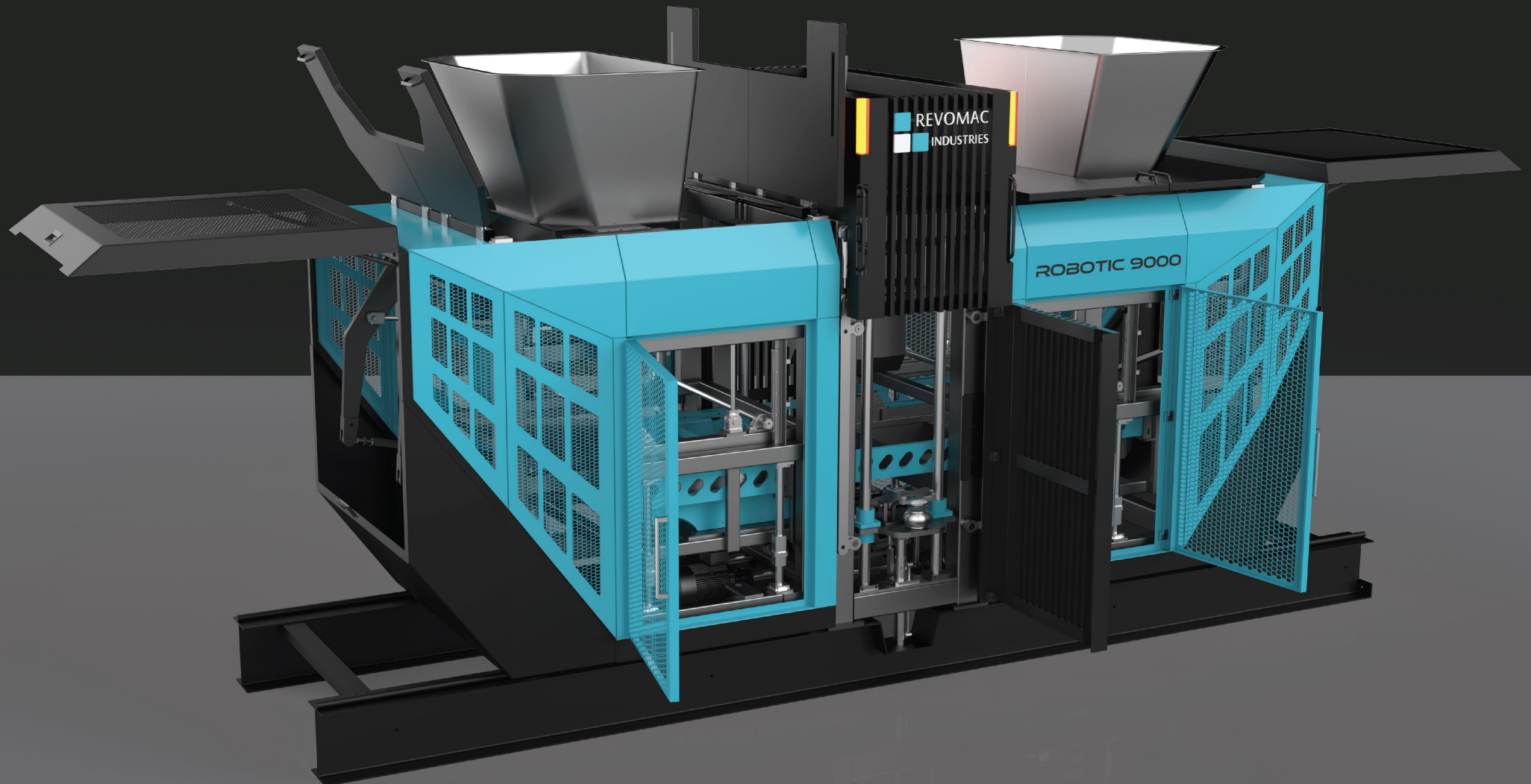
Machines are most often handled and operated by a designated operator. With an impactful Operator Training Programme, we ensure that the person is equipped with necessary skills and knowledge required for seamless functioning.

We offer, Certified Inhouse Training for operators at the Revomac premises. These sessions are conducted on regular intervals to keep them abreast with the working and functioning of the machines.

On-site Training - These are conducted on the client's site upon request or enquiry.
Training video Tutorial- All training sessions are available as video tutorials for future reference and queries.
Also, specific Error-based tutorials are created to offer timely solutions.



A CLOSER GLIMPSE INTO WHAT POWER LOOKS LIKE!



**ARE YOU READY TO GET
ONTO THIS ADVENTURE?**

Corporate office

A - 801, Privilon, SG Highway,
Ahmedabad, Gujarat, India.

☎ +91 81401 58481 | +91 70161 33033

🌐 www.revomac.in

✉ sales@revomac.in

Manufacturing facility:

Plot No:- 1, Shivadhin Industrial Estate,
Beside HP Petrol Pump, Near Amba Hotel
Cross Road, Indore Highway, Chandial,
Ahmedabad - 382 433.
Gujarat, India